



THE KING'S SCHOOL
CHESTER

Colour their lives forever


Willow
Lodge

The King's Infant School



The King's Infant School

Welcome



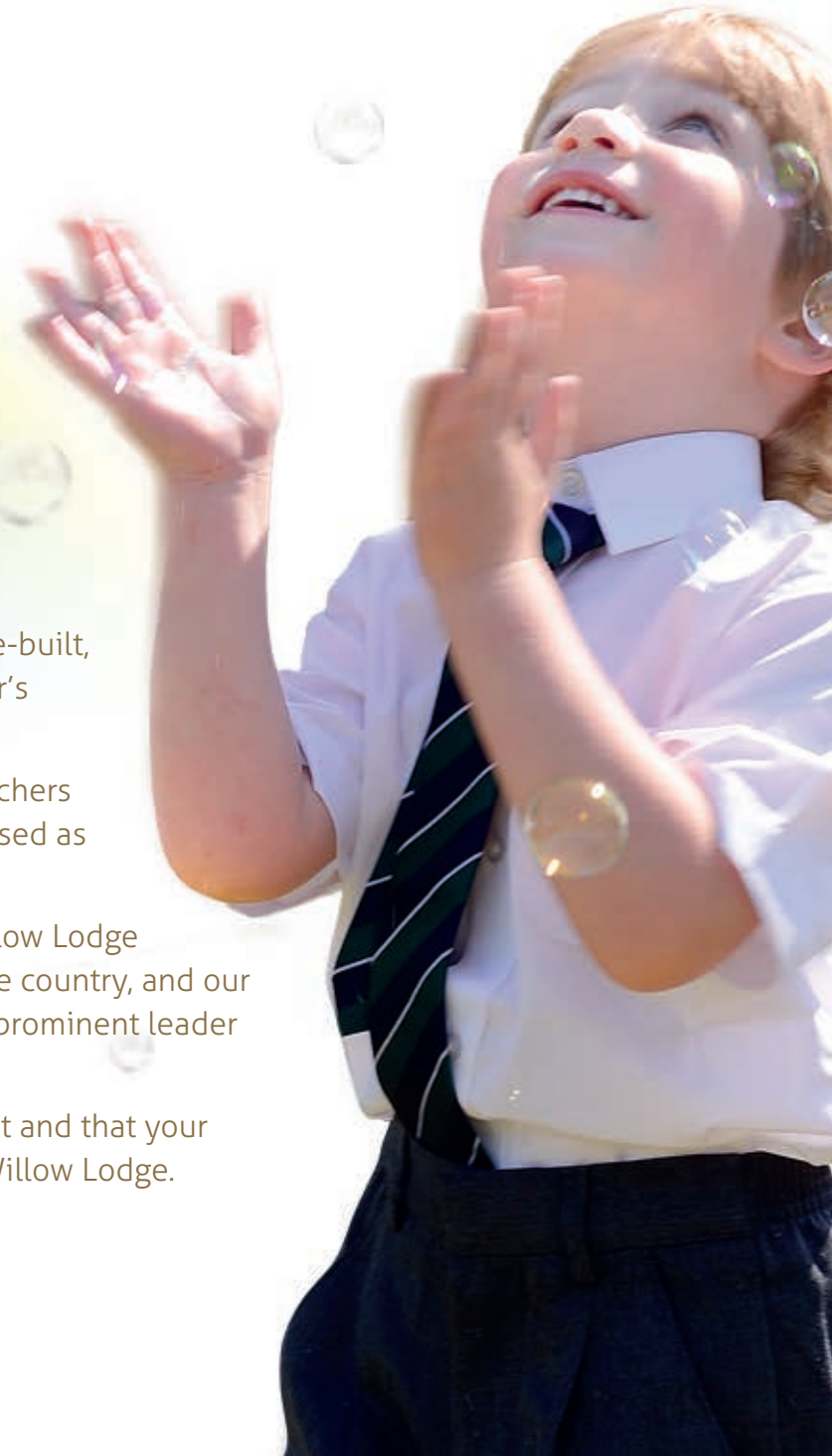
Margaret Ainsworth
Head of Willow Lodge

Welcome to Willow Lodge, the new Infant School at King's. Purpose-built, self-contained and uniquely situated within the grounds of Chester's leading co-educational school.

We are delighted to have brought together a specialist team of teachers and support staff to ensure that Willow Lodge will soon be recognised as the foremost infant school in the area.

Early years are crucial in laying the foundations for excellence. Willow Lodge has had the benefit of advice and planning from experts around the country, and our Head, Margaret Ainsworth, is well-known locally as a dynamic and prominent leader in primary education.

We hope that you will enjoy being part of this exciting environment and that your children will love their time, and thrive on the experience, that is Willow Lodge.



The building blocks for happy infant school days... and a love for life and learning

The King's School has been a beacon of excellence for over 470 years, motivating, enlightening and educating generations of Junior and Senior School pupils. Now for the first time we are delighted to extend a welcome to girls and boys aged 4-7 in our new Infant School, Willow Lodge.

Purpose-built for the needs of young children, it will provide the latest, modern facilities in an attractive eco-friendly building, with its own secure outdoor play area.

Willow Lodge offers the highest quality of specialist teaching in a colourful, caring and safe environment to ensure your child is happy – because we firmly believe that happy children make happy learners.





Happy, confident learners

We believe that *early years* and infant education are vital in setting the foundations which will last your child a lifetime. It is enormously important to recruit teachers who are specialists in *early years* infant teaching. It is a unique sector of education that demands dedicated people who love working with and shaping young minds. All our teachers, assistants and support staff will have these skills and attributes, along with a commitment to nurture and develop your child in a fun and exciting way.

Little children need first and foremost to feel happy and secure and to be with friends. Happy children make happy learners.

We understand that young children develop at their own pace, and teaching at Willow Lodge will be tailored to their individual interests, aptitudes and skills.

As they play happily inside or out, they won't even realise they are learning because we know children perform at their best when they are fully interested and engaged! Gently we will introduce them to the wonderful, exciting world of learning.



Nurturing young minds



Children at Willow Lodge will explore a world of wonder and discovery. We will be teaching a much enriched version of the National Curriculum with the flexibility to make the most of every single day. King's relishes its status as an independent school and the freedom that gives us to add value to each child's experience, and this is no different at Willow Lodge.

Numeracy, literacy and language skills are, of course, the building blocks of successful learning in Willow Lodge, but diversity in the range and depth of activities, catering to each child's individual learning style, will be the hallmark of our provision. In small classes, with a superb range of facilities, play and practical learning will be blended seamlessly to help them develop their communication, reading and number skills.

Our imaginative and innovative programme of learning will be enriched by foreign languages such as French, Spanish and Mandarin, taught in a fun way. Music lessons will ensure every child moves to juniors with the ability to hold a tune, understand rhythm and pitch and also read music.

PE at Willow Lodge will gently introduce co-ordination and confidence by games. Most children love a challenge, but we are sensitive to each one's personal abilities and confidence levels. We aim to engender a passion for games and fair play which will stay with them for life. In addition, each child will learn to swim during weekly lessons in our newly renovated on-site swimming pool.

Drama on the curriculum will help to build children's confidence and self expression. Our infants will benefit from using the most up-to-date IT equipment and software. They will be freely encouraged to learn keyboard and navigation skills and also enhance their learning through the use of iPads in the classroom.

Most importantly they will learn through play. Play cannot be underestimated, as they pick up lifelong social skills – without even realising.



“I am delighted King's is opening an infant school and that my daughter now has the opportunity to follow in her brother's footsteps at the same school.”

Mrs H, current Junior and prospective Infant parent



Smile!

School days are happy days at Willow Lodge

Every parent loves to see a smile on their child's face when it's time for school: to be eagerly told what they've learnt today and what they're looking forward to tomorrow. Each day at Willow Lodge will be different, full of lively learning, play and participation in a huge choice of activities.

From arts and crafts to drama, dance and music. From games and nature rambles in the School's own grounds to closely supervised trips and expeditions. All the time your child's creativity and awareness, of themselves and their world is being nurtured and developed.



Day by day they will discover more about their own potential, and the endless possibilities that learning can open up for them. They'll be able to choose from a broad and varied range of lunchtime clubs to introduce them to new ideas, interests and experiences.

Our Larks and Owls Club will provide safe before-and-after school care within Willow Lodge, exclusively for our infants, so that they can interact with children of their own age and interests.

“I am confident my son will make the best possible start at Willow Lodge.”

Mrs M, prospective parent





A safe and secure environment

All of our activities, from the classroom to the playground and beyond, will of course be overseen by our specialist infant teachers and teaching assistants, with the welfare, well-being and happiness of every girl and boy being carefully attended to at all times.

Willow Lodge is a secure and self-contained School. Indoors and outdoors your child will be supervised by caring staff and will mix with children who are all from their own age group. Willow Lodge will also have access to many of the excellent facilities at



King's Junior and Senior Schools, such as the swimming pool and Vanbrugh Theatre, always accompanied by their teachers. Willow Lodge will have its own access road and parking areas; so you can have complete peace of mind about your little one's safety.





A typical day*

Opening hours: 8.15am - 3.20pm

School won't start until 8.30am, but we will be open at 8.15am so that you can pop in and chat to your child's teacher before school starts. We know that there are always little things about your child you may want us to know!

8.30am start

Morning break of 20 minutes

11.45am - 1.20pm lunch and activity clubs

Afternoon break of 20 minutes

3.20pm finish

Larks and Owls Breakfast and After School Club

The club offers supervised play and activities from 7.45-8.30am in the morning with breakfast and from 3.50-6pm in the afternoon with a snack.

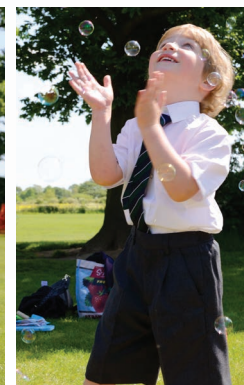
*There may be some adjustments to these times.

The King's School, Wrexham Road, Chester CH4 7QL

For further information call: **01244 689553**

or email: admissions@kingschester.co.uk

www.kingschester.co.uk



A seamless transition

After making great progress at Willow Lodge, we would generally expect our infants to be ready for the new challenges ahead, as they move to King's Junior School.

Having already visited the Junior School several times they'll soon feel confident and at ease as they reacquaint themselves with former friends from Willow Lodge.

The whole process will be simple and seamless as your child continues their journey of educational excellence.



THE KING'S SCHOOL
CHESTER